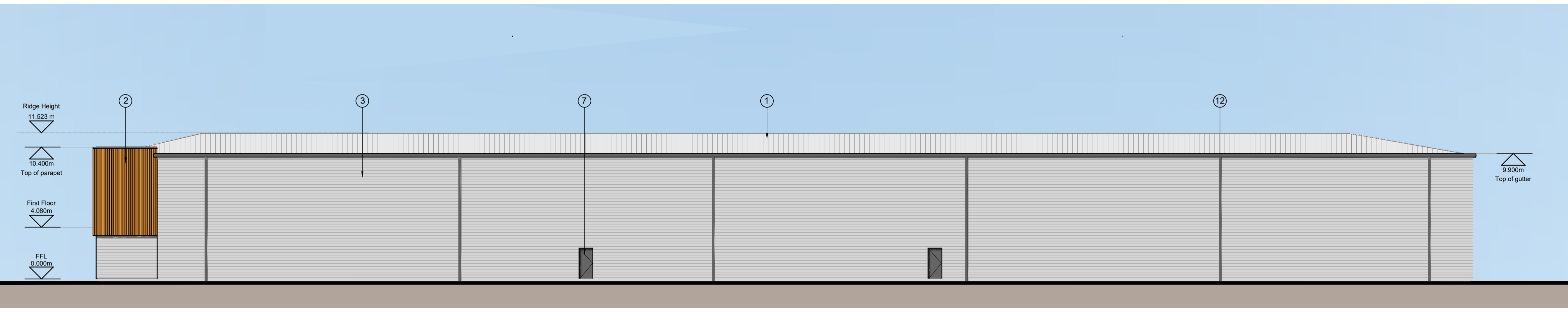
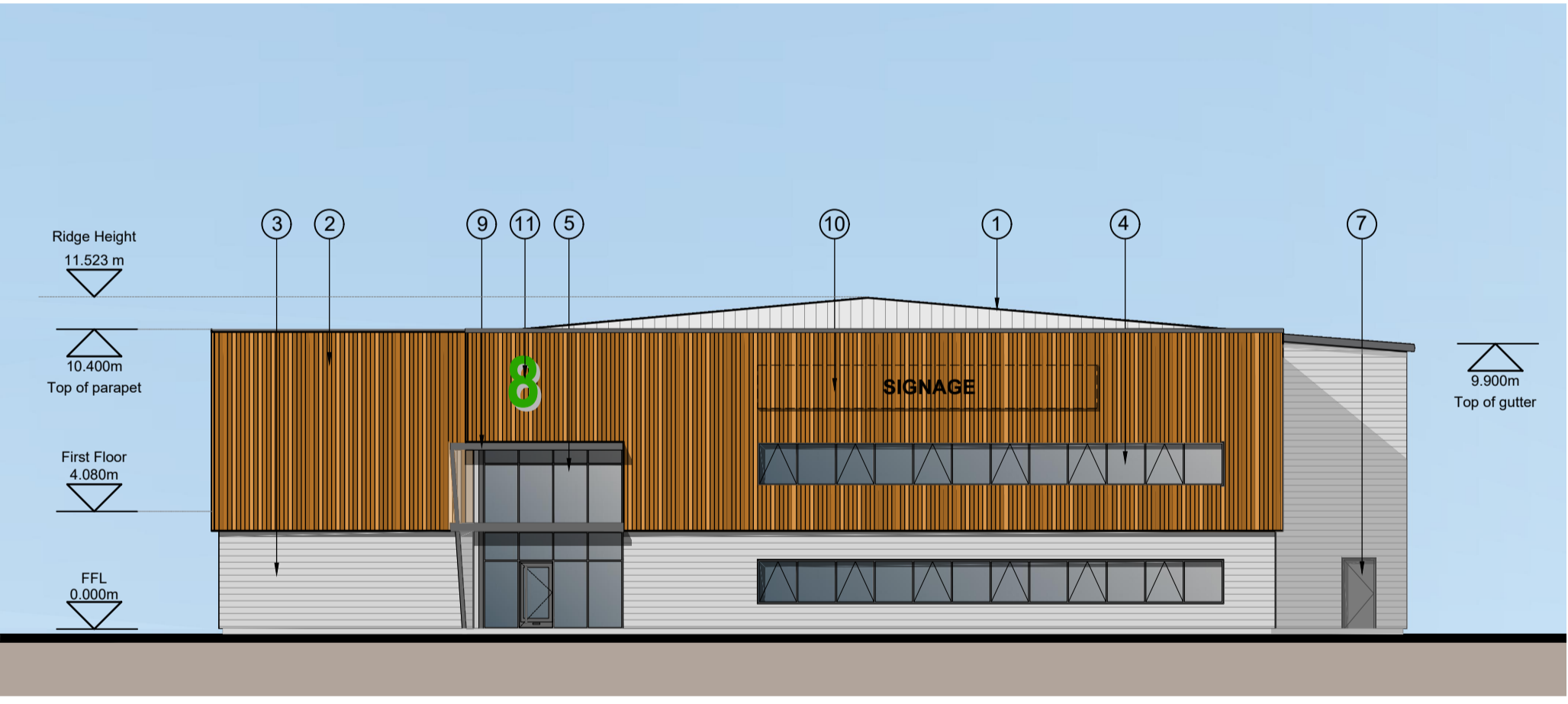




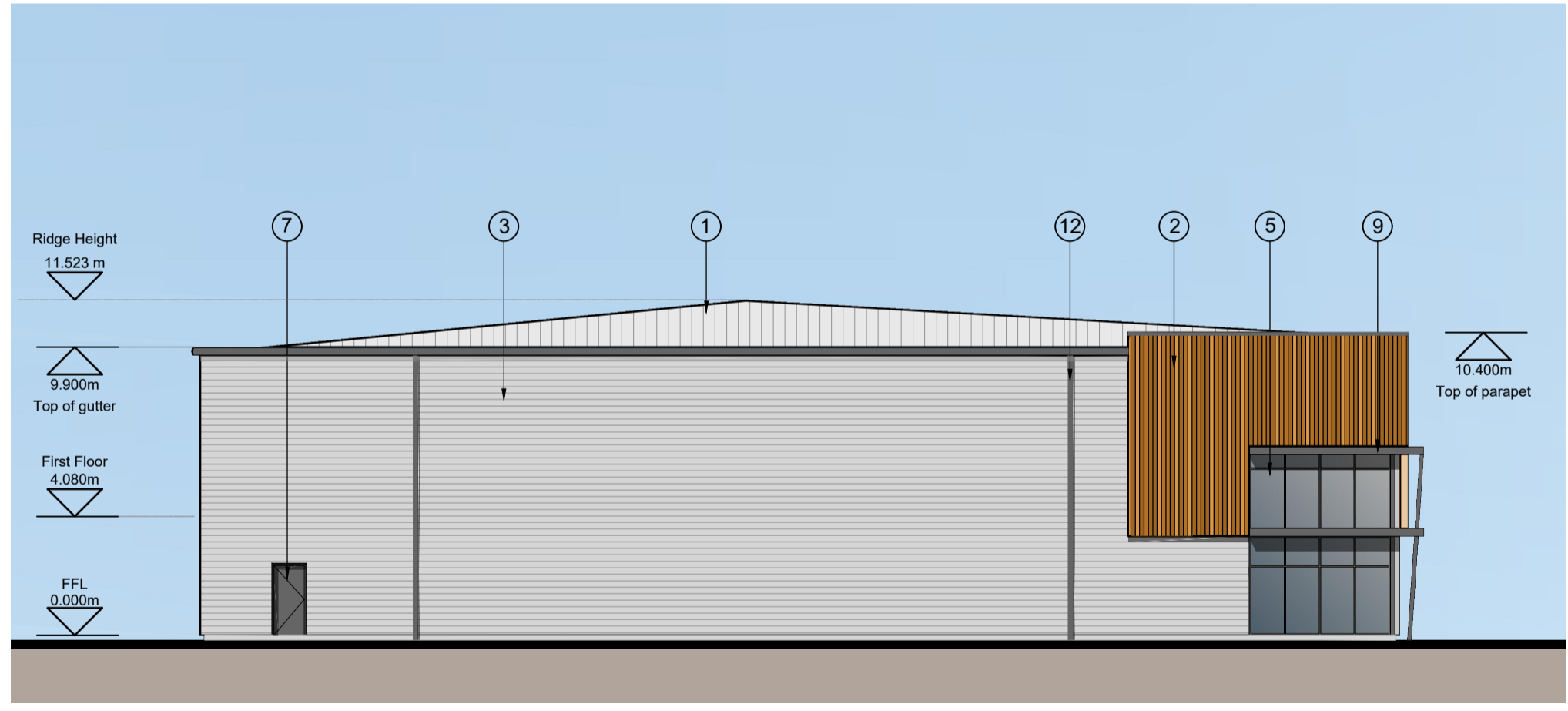
EASTERN ELEVATION



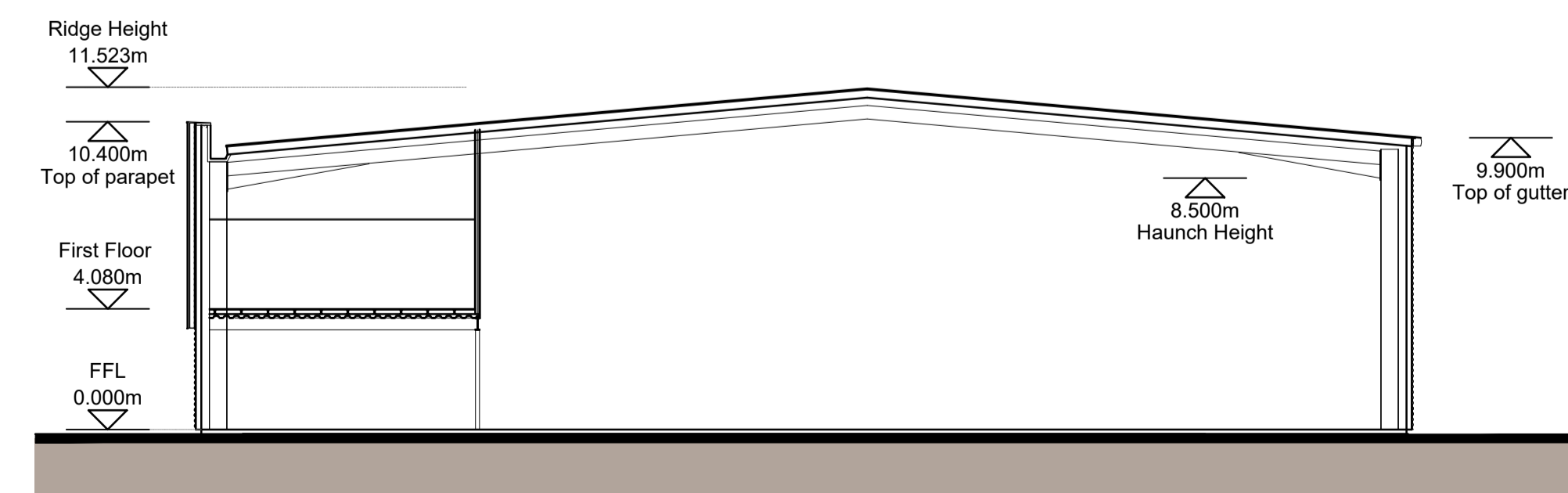
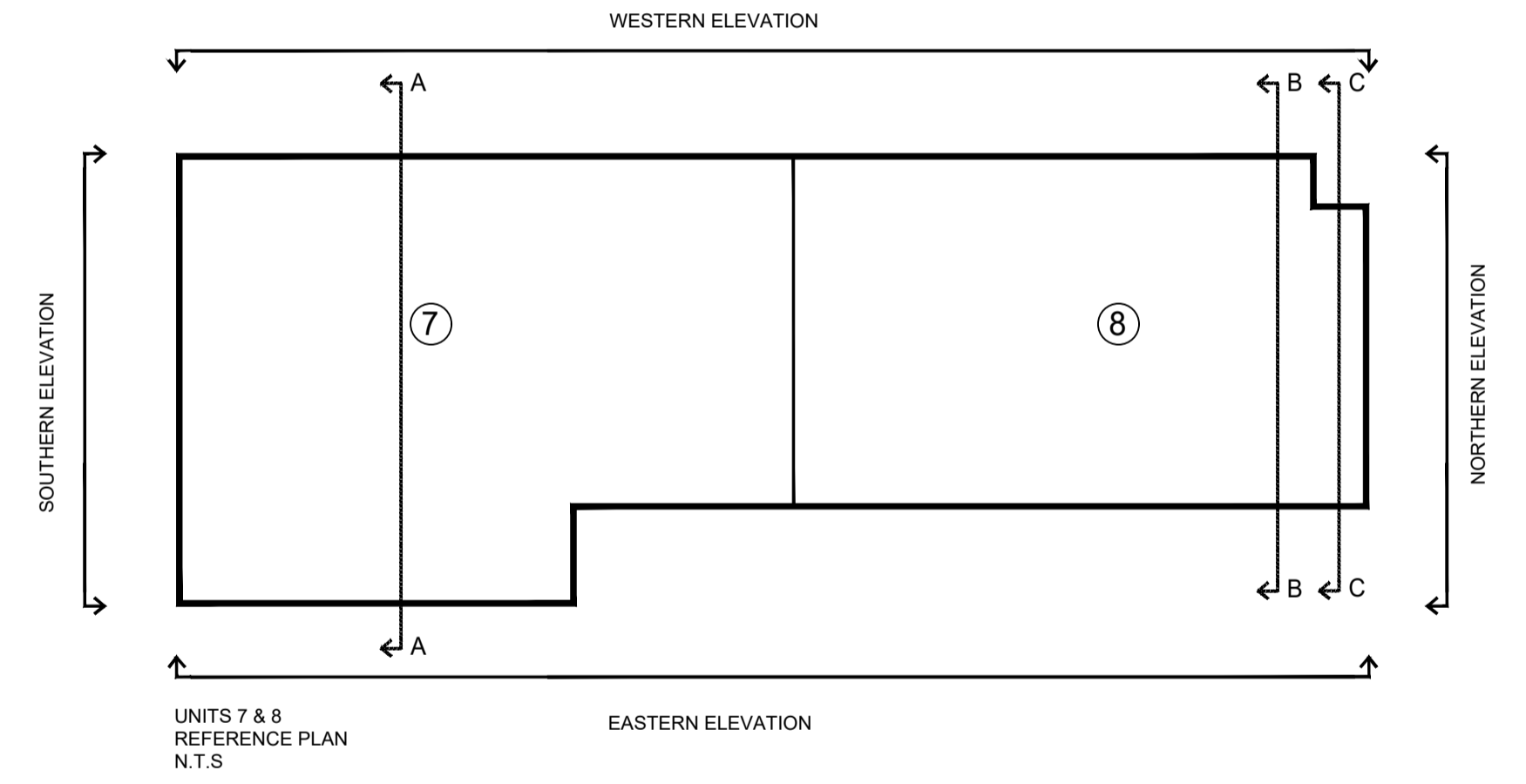
WESTERN ELEVATION



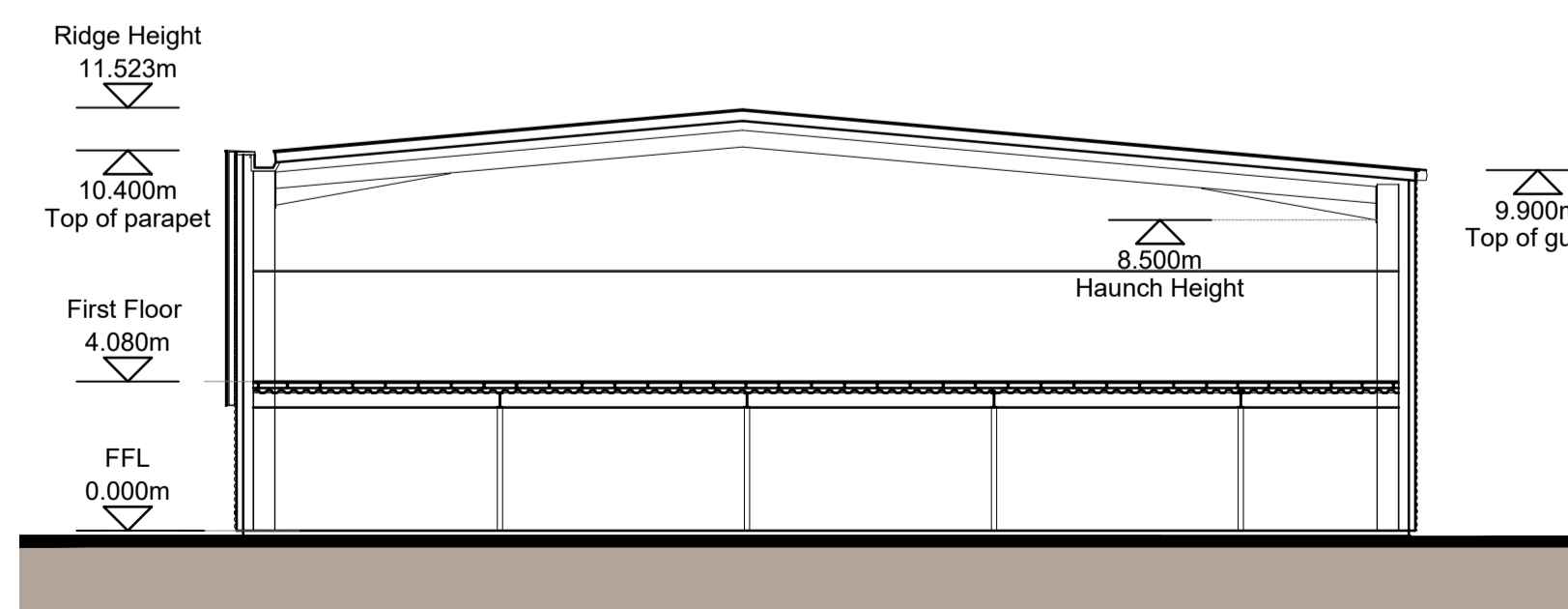
NORTHERN ELEVATION



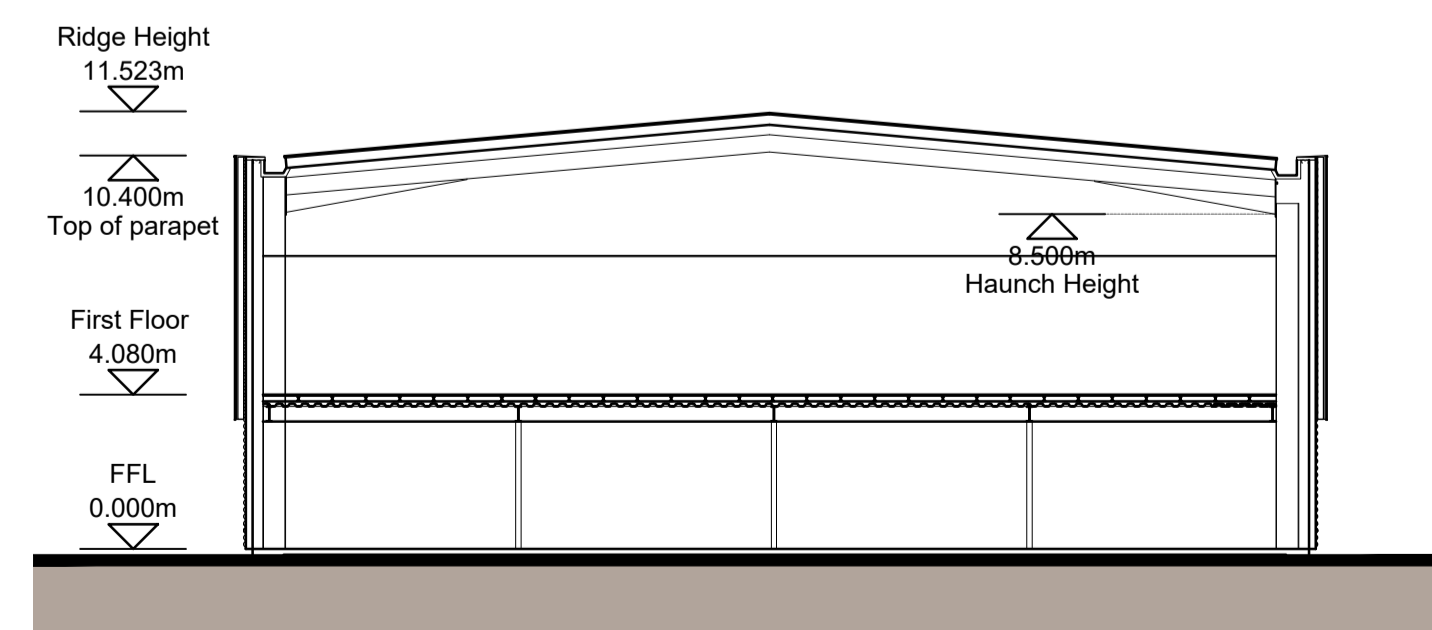
SOUTHERN ELEVATION



SECTION AA



SECTION BB



SECTION CC

- MATERIALS KEY**
- ① PROFILED ROOF CLADDING (GOOSEWING GREY RAL 7038)
 - ② SIBERIAN LARCH CLADDING
 - ③ HORIZONTAL ARC PROFILE CLADDING (METALLIC SILVER RAL 9006)
 - ④ ALUMINIUM FRAMED WINDOWS (ANTHRACITE RAL 7016)
 - ⑤ ALUMINIUM FRAMED ENTRANCE DOORS AND FULL HEIGHT GLAZING (ANTHRACITE RAL 7016)
 - ⑥ LOADING BAY DOORS (ANTHRACITE RAL 7016)
 - ⑦ STEEL PERSONNEL DOORS (ANTHRACITE RAL 7016)
 - ⑧ STEEL BOLLARD (GREEN RAL 6018)
 - ⑨ MAIN ENTRANCE BRISE-SOLEIL
 - ⑩ SIGNAGE ZONE, INDICATIVE
 - ⑪ BACKLIT ILLUMINATED ALUMINIUM UNIT NUMERAL (RAL 6018 FACE)
 - ⑫ ALUMINIUM RAINWATER GOODS (ANTHRACITE RAL 7016)

Figured dimensions only are to be used. All dimensions to be checked onsite. Differences between drawings and between drawings and specification or bills of quantities to be reported to the PRC Group.

© The copyright of the drawings and designs contained therein remains vested in the PRC Group.

Revisions: _____ Drawn/Chkd: _____ Date: _____

189

Client:
HE2 READING 1 GP LTD (LONDON)



Project:
HEADLEY ROAD EAST
WOODLEY

12 Warren Yard,
Warren Park,
Milton Keynes,
MK12 5HW
01908 305 246
info@prc-group.com
www.prc-group.com

Drawing Title:
UNIT 7-8
PROPOSED ELEVATIONS
& SECTION

Scale @ A1: 1:200
Checked by: JR
Date: SEPT 21

Job No: 11359
Stage: PL 122
Drawing No: Rev: _____

Issue Status:
Construction Preliminary
Information Approval
Tender

Architecture
Planning
Master Planning
Urban Design
Interiors
Landscape

Offices
Woking
London
Milton Keynes
Warsaw

This page is intentionally left blank